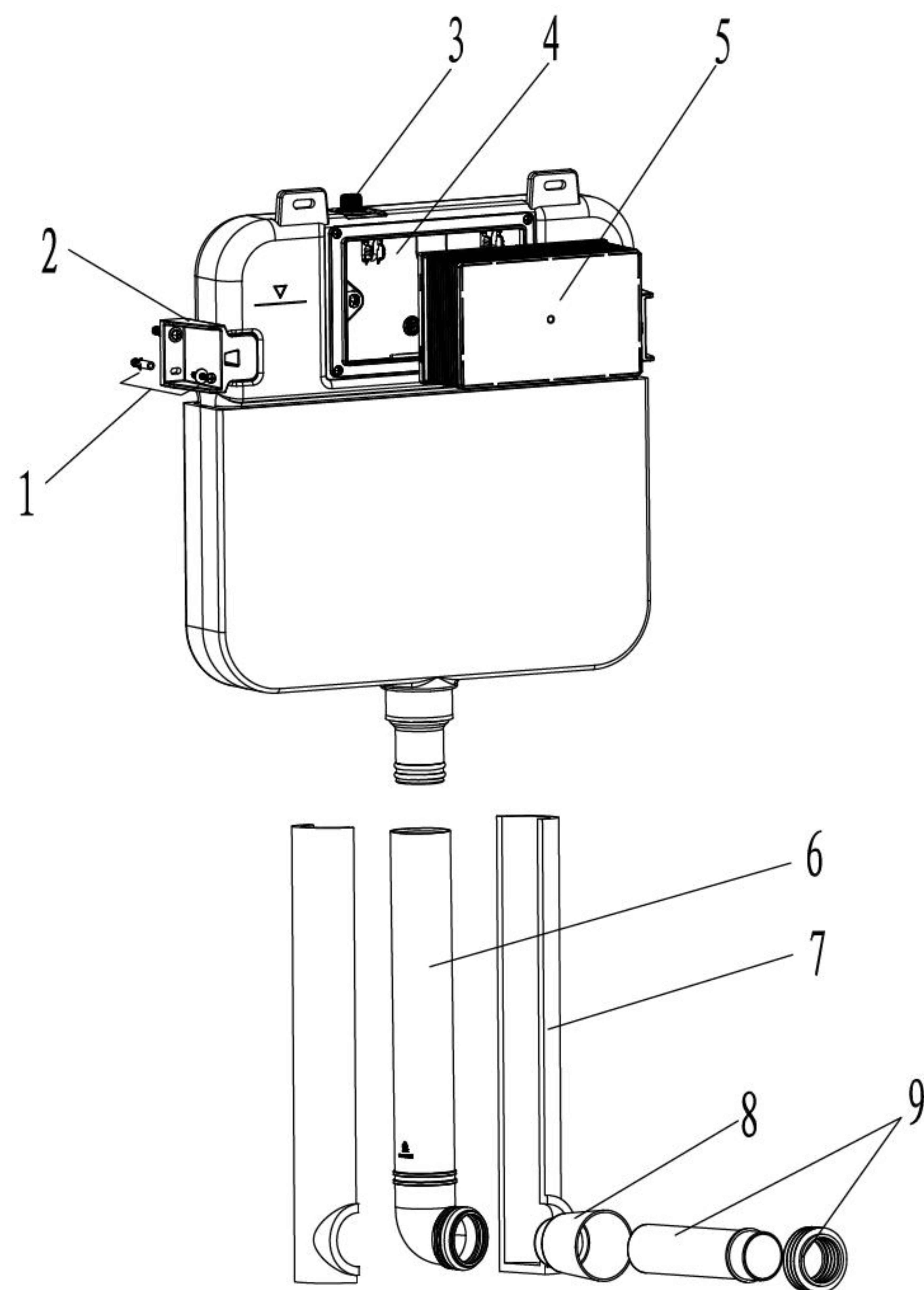


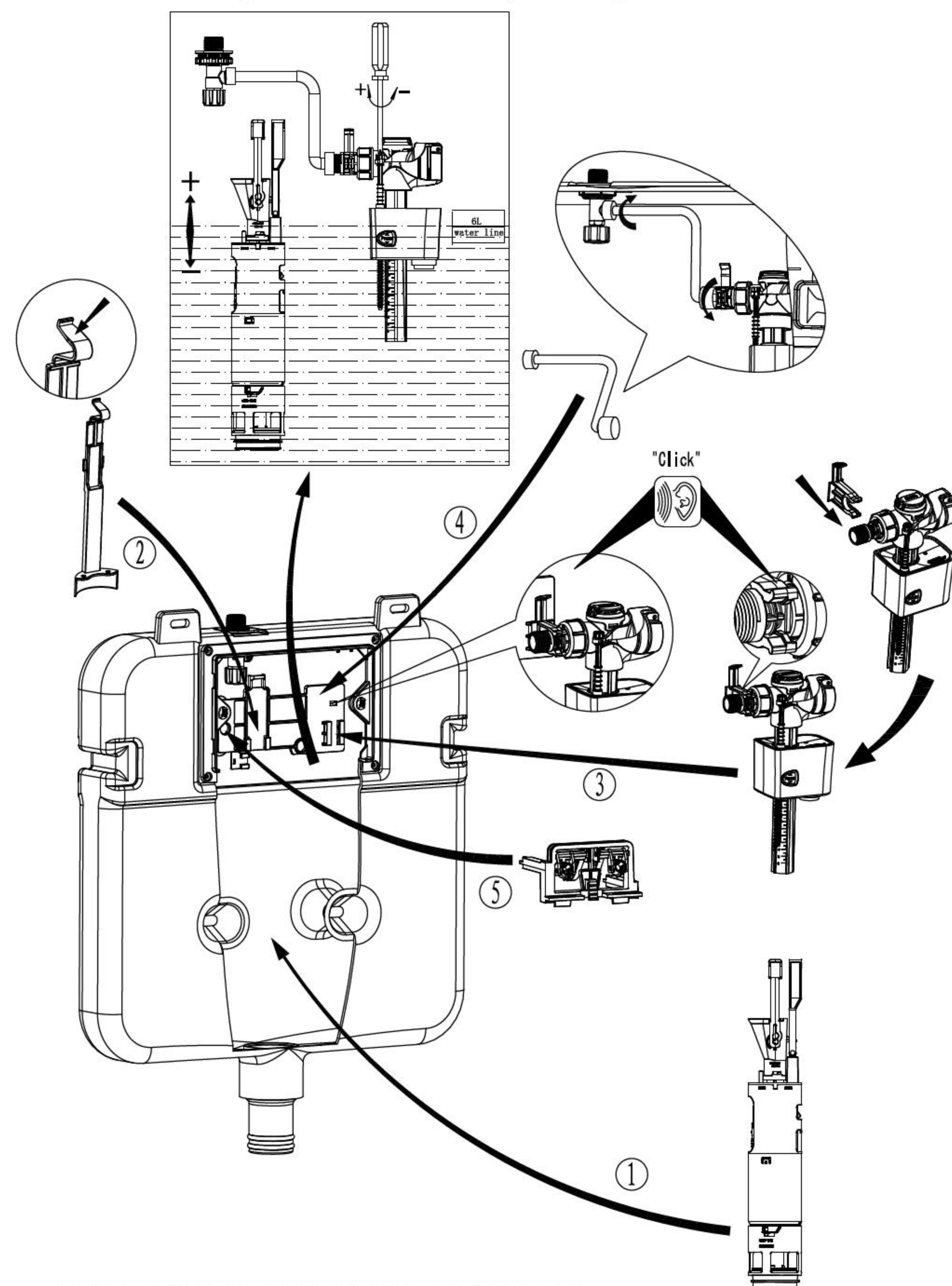
_____ Frame-structure _____
_____ Concealed Cistern _____
_____ Installation Manual _____



List of main installation accessories

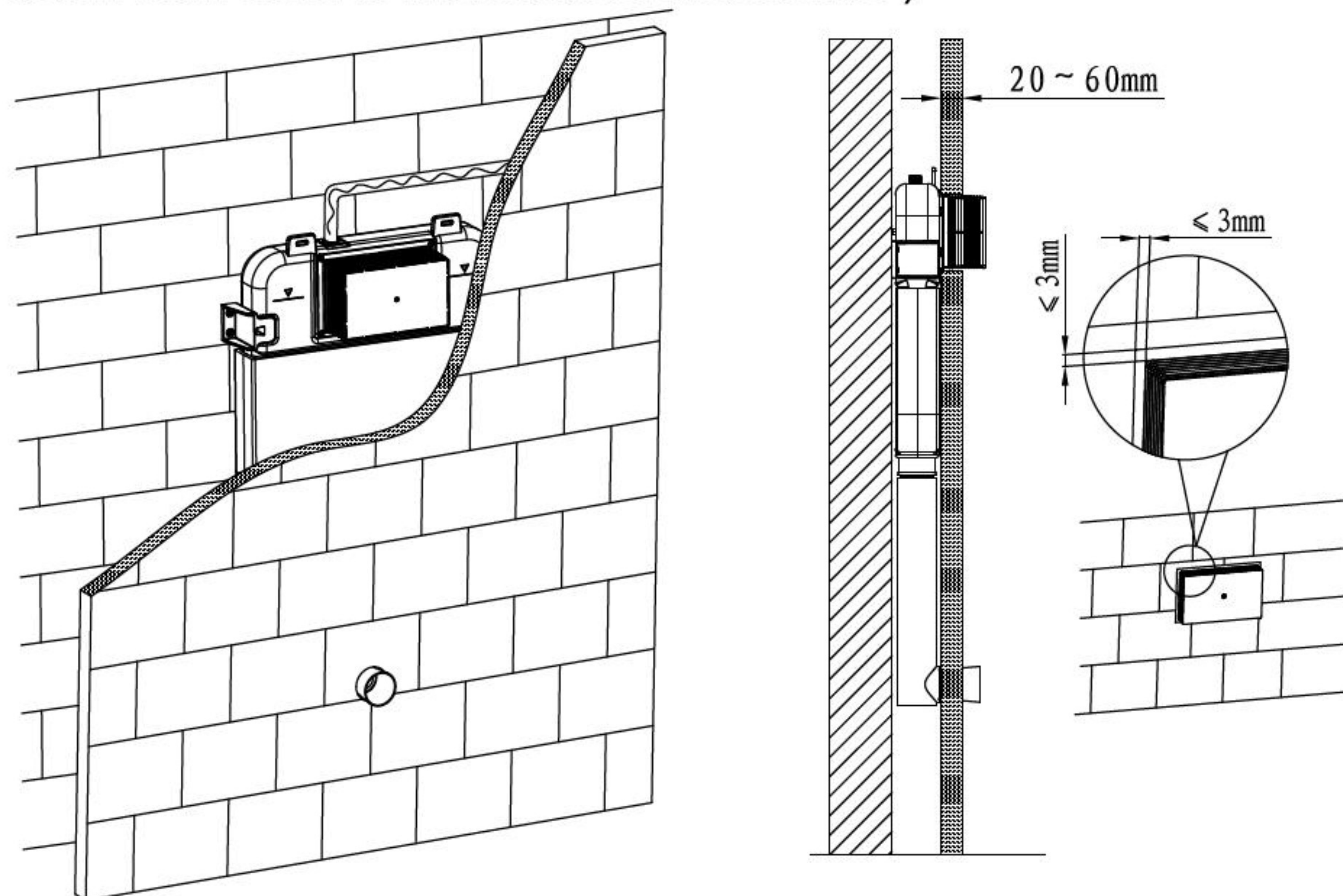
NO.	Description	Qty	Function
1	Expansion screw	4	Fixation of concealed cistern
2	Cistern fixing clip	2	
3	Angle valve	1	Fill valve inlet and shut-off
4	Cistern cover	1	Airproof tank and mounting of locking bracket
5	Plastic holder	1	To reserve space for installation of actuator at wall building To prevent dust and impurities into tank at wall building
6	Connecting tube	1	Water inlet to ceramic bowl
7	Tube cover	2	To protect connecting tube
8	Piping stopper	1	To reserve space for straight tube and connecting pipe
9	Straight tube	1	To joint cistern into ceramic bowl (cutting in accordance with wall thickness)

9. Internal flushing mechanism assembly drawing

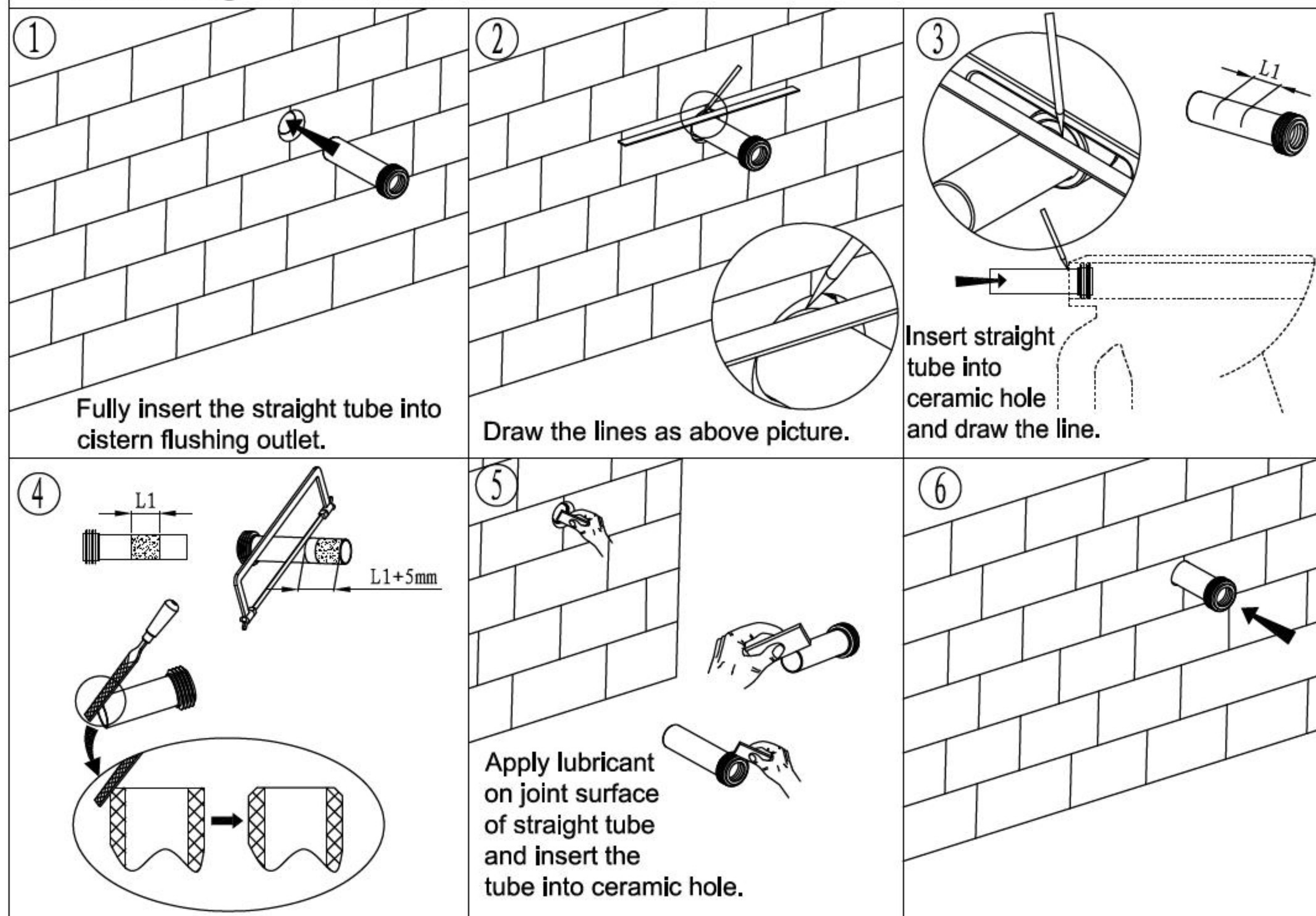


The internal flushing mechanism are already well-assembled and above picture only for reference.

7. Wall thickness range 20~60mm (from outer exterior of cistern foam cover to finished decorated surface)



8. Mounting of ceramic bowl



Important instruction:

1. Please adhere to the following installation instructions. We shall not be responsible for failures and loss that are contributed to improper installation.
2. Please confirm the fixation location of cistern prior to installation and obtain the finished floor surface. Draw FEL on installation wall and follow it as baseline from ZERO (0) level.
3. The instructions have been composed based in the latest product specifications. We reserve the right to make modifications to the packaging and specifications without providing prior notification.

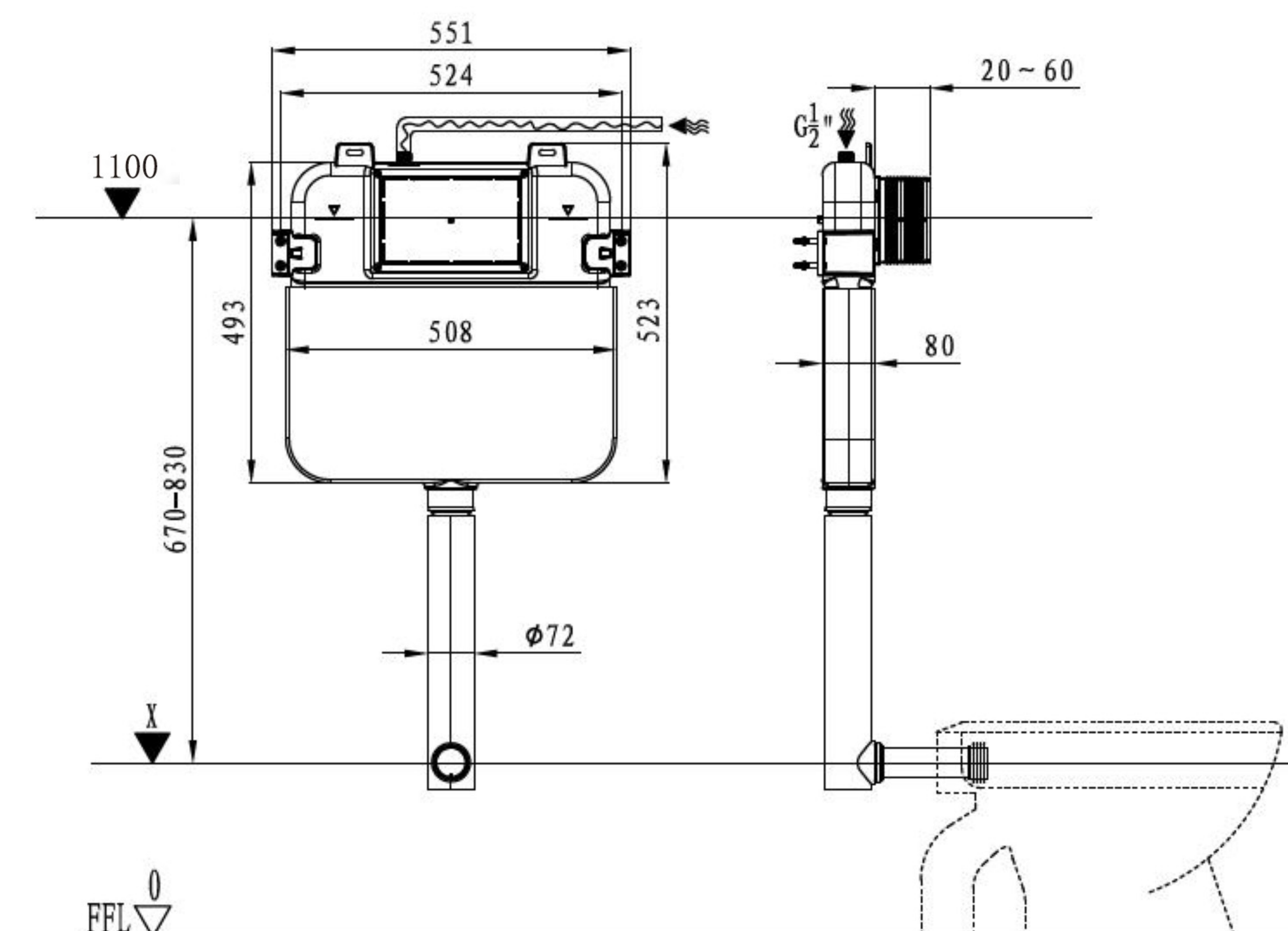
NOTES:

1. Mount before bricks building.
2. All size unit in MM.
3. Follow the material product, should there is an unconformity with drawing.

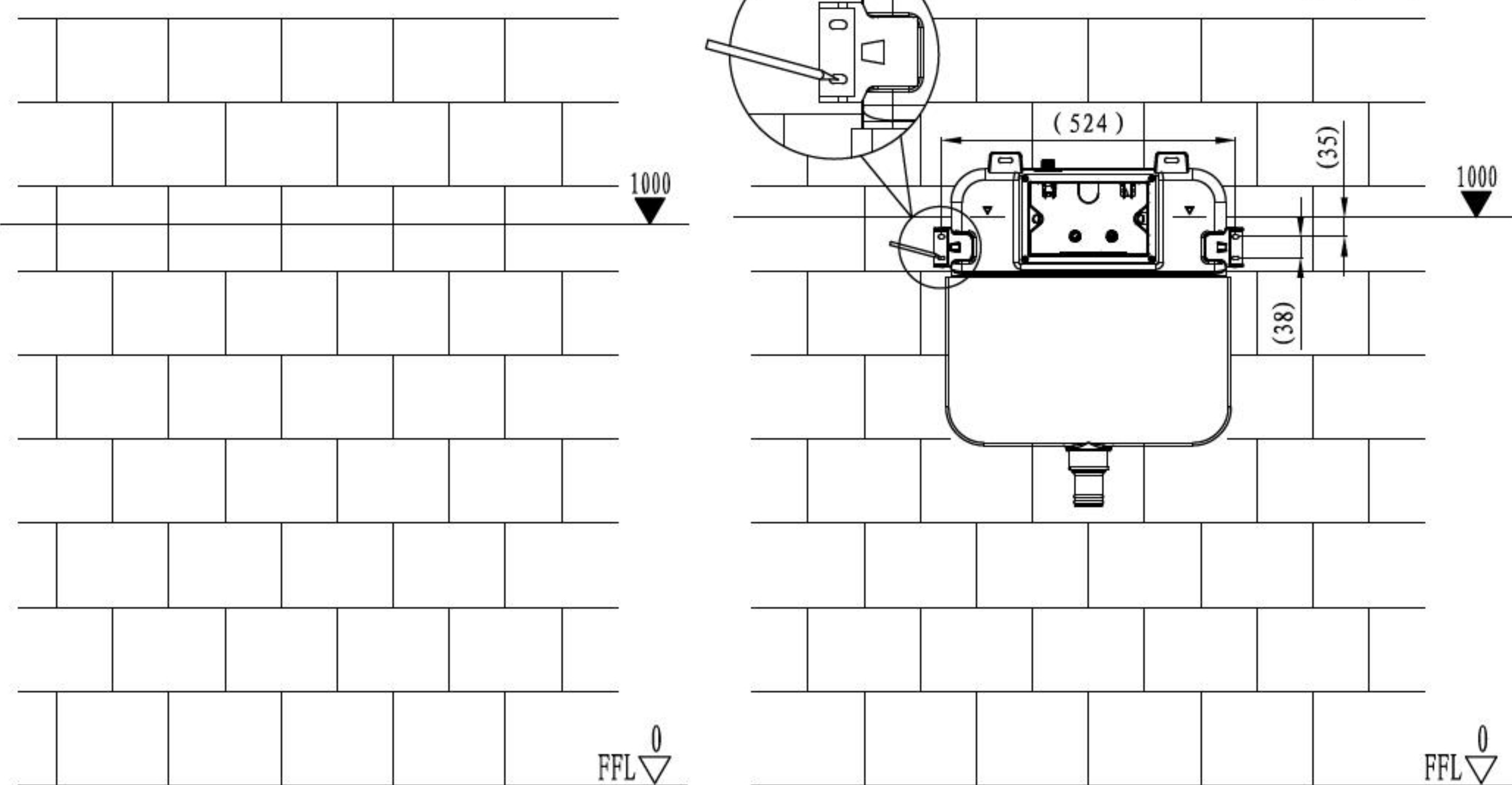
! FFL 0 = FINISHED FLOOR

1. General dimension and water supply drawing

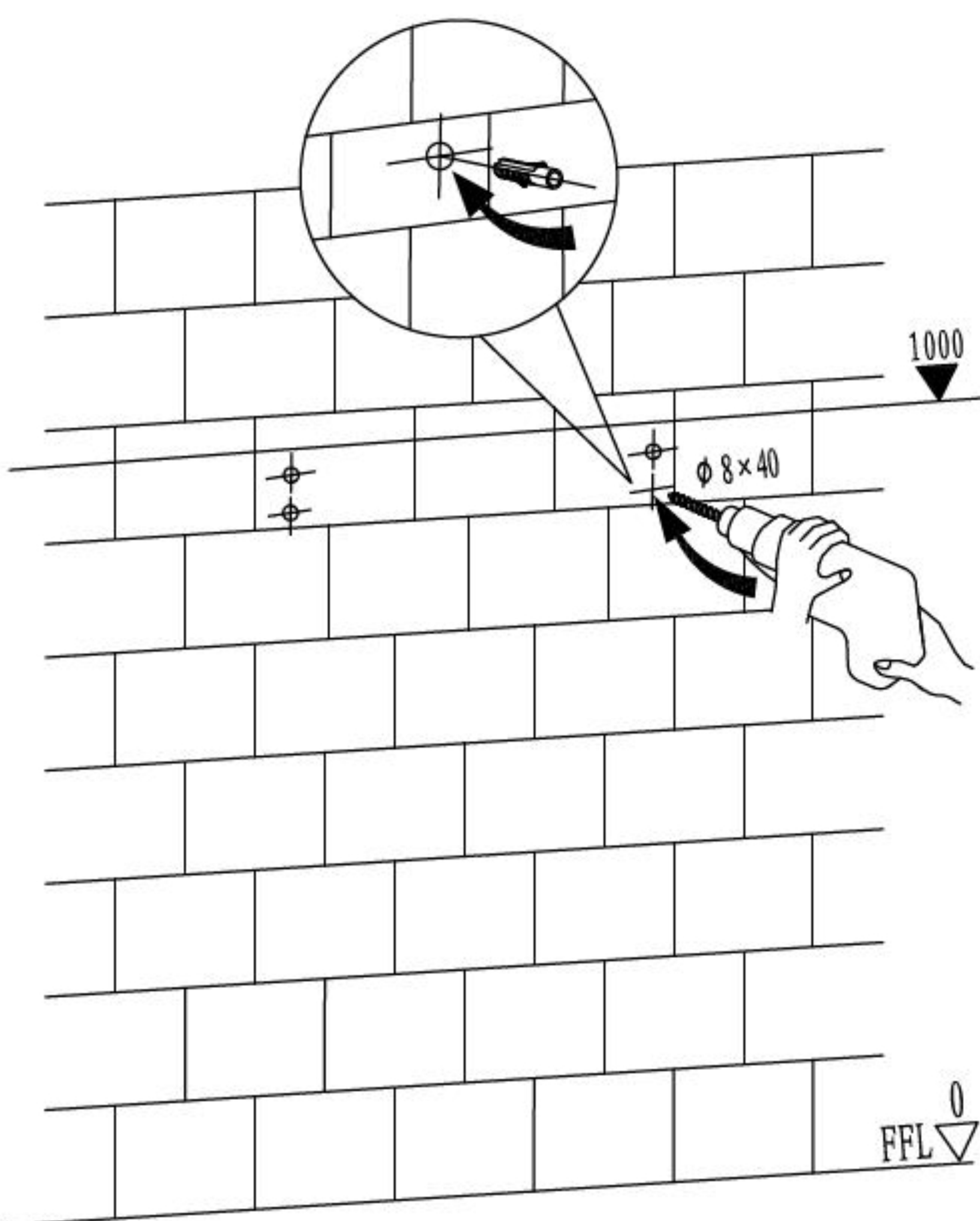
Water supply to cistern.
(water supply should be connected to angle valve inside cistern)



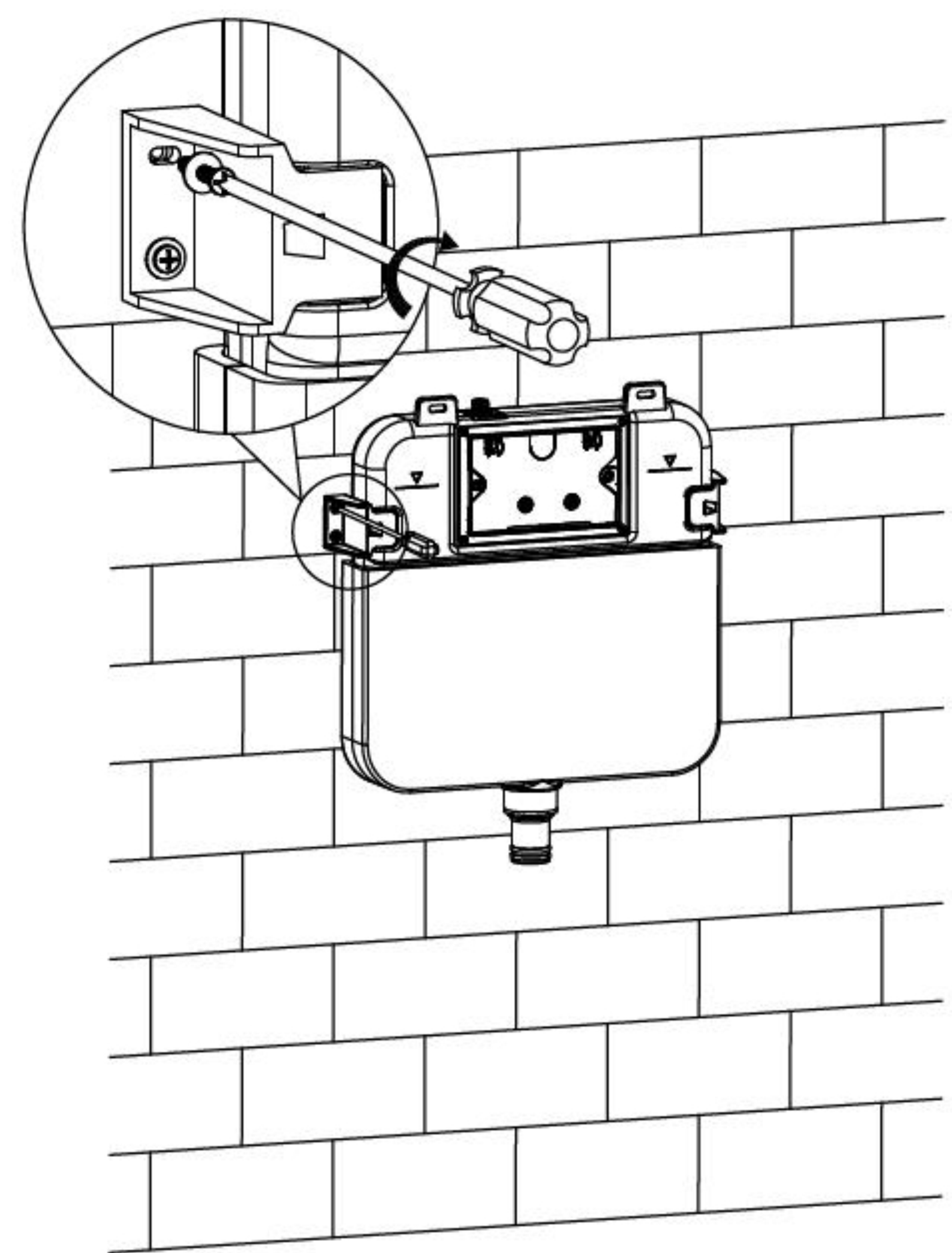
2.Determine the position of 1m line and the position of drilling holes



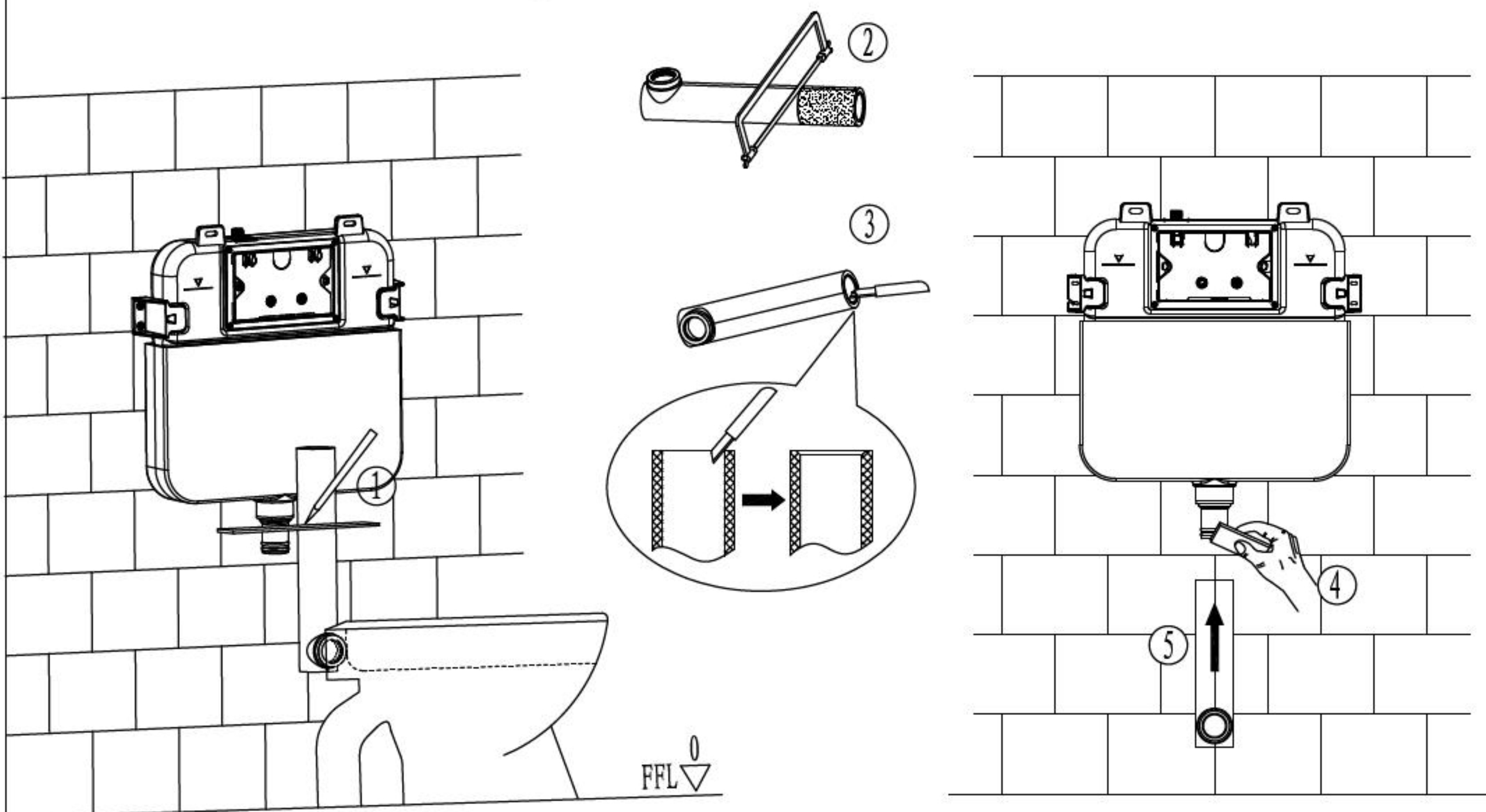
3.Drilling and installation of expansion screw



4.Installation of concealed cistern



5.Installation of connecting tube



6.Mounting of installation accessories

